

CDC20 Polyclonal Antibody

Catalog No. E-AB-10218

Note: Centrifuge before opening to ensure complete recovery of vial contents.

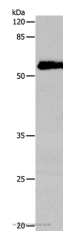
Description

Reactivity	Human,Mouse,Rat
Immunogen	Recombinant protein of human CDC20
Host	Rabbit
Isotype	IgG
Purification	Affinity purification
Conjugation	Unconjugated
Buffer	PBS with 0.05% sodium azide and 50% glycerol, PH7.4

Applications Recommended Dilution

WB 1:500-1:2000

Data



Western Blot analysis of Human cervical cancer tissue using CDC20 Polyclonal Antibody at dilution of 1:600

Calculated Mw:55kDa

Preparation & Storage

Storage Store at -20°C. Avoid freeze / thaw cycles.

Background

CDC20 appears to act as a regulatory protein interacting with several other proteins at multiple points in the cell cycle. It is required for two microtubule-dependent processes, nuclear movement prior to anaphase and chromosome separation.

For Research Use Only