

CDC25A Polyclonal Antibody

Catalog No. E-AB-10219

Note: Centrifuge before opening to ensure complete recovery of vial contents.

Description

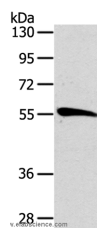
Reactivity	Human,Mouse,Rat
Immunogen	Recombinant protein of human CDC25A
Host	Rabbit
Isotype	IgG
Purification	Affinity purification
Conjugation	Unconjugated
Buffer	PBS with 0.05% sodium azide and 50% glycerol, PH7.4

Applications

Recommended Dilution

WB 1:500-1:2000

Data



Western Blot analysis of Mouse heart tissue using
CDC25A Polyclonal Antibody at dilution of 1:162.5
Calculated Mw:59kDa

Preparation & Storage

Storage Store at -20°C. Avoid freeze / thaw cycles.

Background

CDC25A is a member of the CDC25 family of phosphatases. CDC25A is required for progression from G1 to the S phase of the cell cycle. It activates the cyclin-dependent kinase CDC2 by removing two phosphate groups. CDC25A is specifically degraded in response to DNA damage, which prevents cells with chromosomal abnormalities from progressing through cell division. CDC25A is an oncogene, although its exact role in oncogenesis has not been demonstrated. Two transcript variants encoding different isoforms have been found for this gene.

For Research Use Only