

## CMTM2 Polyclonal Antibody

**Catalog No.** E-AB-10237

*Note:* Centrifuge before opening to ensure complete recovery of vial contents.

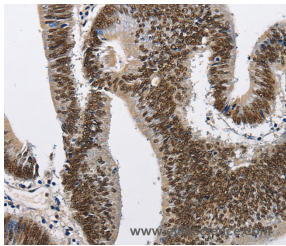
### Description

<b>Reactivity</b>	Human
<b>Immunogen</b>	Recombinant protein of human CMTM2
<b>Host</b>	Rabbit
<b>Isotype</b>	IgG
<b>Purification</b>	Affinity purification
<b>Conjugation</b>	Unconjugated
<b>Buffer</b>	PBS with 0.05% sodium azide and 50% glycerol, PH7.4

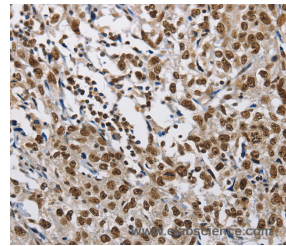
### Applications Recommended Dilution

<b>IHC</b>	1:100-1:300
------------	-------------

### Data



Immunohistochemistry of paraffin-embedded Human colon cancer tissue using CMTM2 Polyclonal Antibody at dilution 1:60



Immunohistochemistry of paraffin-embedded Human esophagus cancer tissue using CMTM2 Polyclonal Antibody at dilution 1:60

### Preparation & Storage

**Storage** Store at -20°C. Avoid freeze / thaw cycles.

### Background

This gene belongs to the chemokine-like factor gene superfamily, a novel family that links the chemokine and the transmembrane 4 superfamilies of signaling molecules. The protein encoded by this gene may play an important role in testicular development.

### For Research Use Only