

GJB3 Polyclonal Antibody

Catalog No. E-AB-10266

Note: Centrifuge before opening to ensure complete recovery of vial contents.

Description

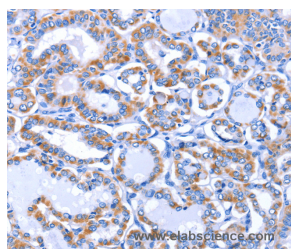
Reactivity	Human
Immunogen	Recombinant protein of human GJB3
Host	Rabbit
Isotype	IgG
Purification	Affinity purification
Conjugation	Unconjugated
Buffer	PBS with 0.05% sodium azide and 50% glycerol, PH7.4

Applications

Recommended Dilution

IHC 1:50-1:200

Data



Immunohistochemistry of paraffin-embedded Human thyroid cancer tissue using GJB3 Polyclonal Antibody at dilution 1:30

Preparation & Storage

Storage Store at -20°C. Avoid freeze / thaw cycles.

Background

This gene is a member of the connexin gene family. The encoded protein is a component of gap junctions, which are composed of arrays of intercellular channels that provide a route for the diffusion of low molecular weight materials from cell to cell. Mutations in this gene can cause non-syndromic deafness or erythrokeratoderma variabilis, a skin disorder. Alternative splicing results in multiple transcript variants encoding the same protein.

For Research Use Only