

EGR1 Polyclonal Antibody

Catalog No. E-AB-10299

Note: Centrifuge before opening to ensure complete recovery of vial contents.

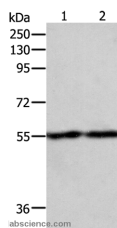
Description

Reactivity	Human,Mouse,Rat
Immunogen	Recombinant protein of human EGR1
Host	Rabbit
Isotype	IgG
Purification	Affinity purification
Conjugation	Unconjugated
Buffer	PBS with 0.05% sodium azide and 50% glycerol, PH7.4

Applications Recommended Dilution

WB 1:200-1:1000

Data



Western Blot analysis of RAW264.7 and NIH/3T3 cell using EGR1 Polyclonal Antibody at dilution of 1:400
Calculated Mw:58kDa

Preparation & Storage

Storage Store at -20°C. Avoid freeze / thaw cycles.

Background

EGR-1 (Early growth response protein 1) also known as Zif268 (zinc finger protein 225) or NGFI-A (nerve growth factor-induced protein A) is a protein that in humans is encoded by the EGR1 gene. The protein encoded by this gene belongs to the EGR family of C2H2-type zinc-finger proteins. It is a nuclear protein and functions as a transcriptional regulator. The products of target genes it activates are required for differentiation and mitogenesis. Studies suggest this is a cancer suppressor gene. Recognizes and binds to the DNA sequence 5'-CGCCCCGC-3'(EGR-site).

For Research Use Only