

## FGL1 Polyclonal Antibody

**Catalog No.** E-AB-10321

**Note:** Centrifuge before opening to ensure complete recovery of vial contents.

### Description

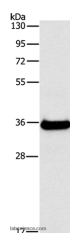
<b>Reactivity</b>	Human,Mouse,Rat
<b>Immunogen</b>	Recombinant protein of human FGL1
<b>Host</b>	Rabbit
<b>Isotype</b>	IgG
<b>Purification</b>	Affinity purification
<b>Conjugation</b>	Unconjugated
<b>Buffer</b>	PBS with 0.05% sodium azide and 50% glycerol, PH7.4

### Applications

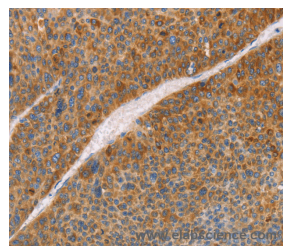
### Recommended Dilution

<b>WB</b>	1:500-1:2000
<b>IHC</b>	1:50-1:200

### Data



Western Blot analysis of Human fetal liver tissue using FGL1 Polyclonal Antibody at dilution of 1:500  
**Calculated Mw:36kDa**



Immunohistochemistry of paraffin-embedded Human liver cancer using FGL1 Polyclonal Antibody at dilution of 1:50

### Preparation & Storage

**Storage** Store at -20°C. Avoid freeze / thaw cycles.

### Background

Fibrinogen-like 1 is a member of the fibrinogen family. This protein is homologous to the carboxy terminus of the fibrinogen beta- and gamma- subunits which contains the four conserved cysteines of fibrinogens and fibrinogen related proteins. However, this protein lacks the platelet-binding site, cross-linking region and a thrombin-sensitive site which are necessary for fibrin clot formation. This protein may play a role in the development of hepatocellular carcinomas. Four alternatively spliced transcript variants encoding the same protein exist for this gene.

### For Research Use Only