

FSHR Polyclonal Antibody

Catalog No. E-AB-10326

Note: Centrifuge before opening to ensure complete recovery of vial contents.

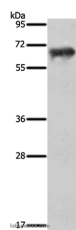
Description

Reactivity	Human, Mouse, Rat
Immunogen	Recombinant protein of human FSHR
Host	Rabbit
Isotype	IgG
Purification	Affinity purification
Conjugation	Unconjugated
Buffer	PBS with 0.05% sodium azide and 50% glycerol, PH7.4

Applications Recommended Dilution

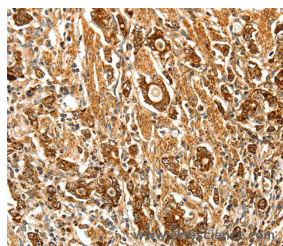
WB 1:500-1:2000,
IHC 1:100-1:300

Data

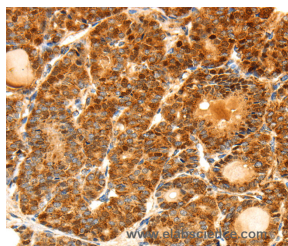


Western Blot analysis of Human ovarian cancer tissue using FSHR Polyclonal Antibody at dilution of 1:950

Calculated Mw:71kDa



Immunohistochemistry of paraffin-embedded Human gastric cancer using FSHR Polyclonal Antibody at dilution of 1:70



Immunohistochemistry of paraffin-embedded Human thyroid cancer using FSHR Polyclonal Antibody at dilution of 1:70

Preparation & Storage

Storage Store at -20°C. Avoid freeze / thaw cycles.

For Research Use Only

Background

The protein encoded by this gene belongs to family 1 of G-protein coupled receptors. It is the receptor for follicle stimulating hormone and functions in gonad development. Mutations in this gene cause ovarian dysgenesis type 1, and also ovarian hyperstimulation syndrome. Alternative splicing results in multiple transcript variants. Its activation is necessary for the hormonal functioning of FSH. FSHRs are found in the ovary, testis, and uterus.