

HPSE Polyclonal Antibody

Catalog No. E-AB-10368

Note: Centrifuge before opening to ensure complete recovery of vial contents.

Description

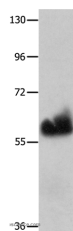
Reactivity	Human
Immunogen	Recombinant protein of human HPSE
Host	Rabbit
Isotype	IgG
Purification	Affinity purification
Conjugation	Unconjugated
Buffer	PBS with 0.05% sodium azide and 50% glycerol, PH7.4

Applications

Recommended Dilution

WB 1:500-1:2000

Data



Western Blot analysis of 231 cell using HPSE Polyclonal Antibody at dilution of 1:100
Calculated Mw:61kDa

Preparation & Storage

Storage Store at -20°C. Avoid freeze / thaw cycles.

Background

Heparan sulfate proteoglycans are major components of the basement membrane and extracellular matrix. The protein encoded by this gene is an enzyme that cleaves heparan sulfate proteoglycans to permit cell movement through remodeling of the extracellular matrix. In addition, this cleavage can release bioactive molecules from the extracellular matrix. Several transcript variants encoding different isoforms have been found for this gene.

For Research Use Only