

## HSP75 Polyclonal Antibody

**Catalog No.** E-AB-10381

*Note:* Centrifuge before opening to ensure complete recovery of vial contents.

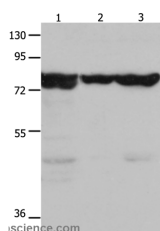
### Description

<b>Reactivity</b>	Human,Mouse,Rat
<b>Immunogen</b>	Recombinant protein of human TRAP1
<b>Host</b>	Rabbit
<b>Isotype</b>	IgG
<b>Purification</b>	Affinity purification
<b>Conjugation</b>	Unconjugated
<b>Buffer</b>	PBS with 0.05% sodium azide and 50% glycerol, PH7.4

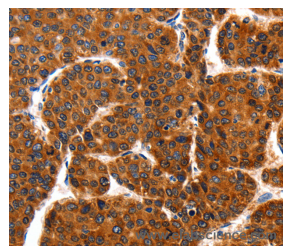
### Applications Recommended Dilution

<b>WB</b>	1:1000-1:5000
<b>IHC</b>	1:100-1:200

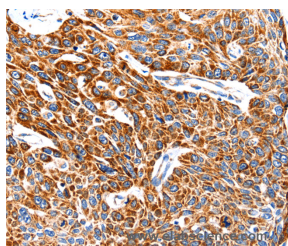
### Data



Western Blot analysis of Mouse kidney tissue, 293T and hela cell using HSP75 Polyclonal Antibody at dilution of 1:1500  
**Calculated Mw:80kDa**



Immunohistochemistry of paraffin-embedded Human liver cancer using HSP75 Polyclonal Antibody at dilution of 1:100



Immunohistochemistry of paraffin-embedded Human esophagus cancer using HSP75 Polyclonal Antibody at dilution of 1:100

### Preparation & Storage

**Storage** Store at -20°C. Avoid freeze / thaw cycles.

### For Research Use Only

## Background

HSP90 proteins are highly conserved molecular chaperones that have key roles in signal transduction, protein folding, protein degradation, and morphologic evolution. HSP90 proteins normally associate with other cochaperones and play important roles in folding newly synthesized proteins or stabilizing and refolding denatured proteins after stress. TRAP1 is a mitochondrial HSP90 protein. Other HSP90 proteins are found in cytosol and endoplasmic reticulum