

## NAP1L1 Polyclonal Antibody

**Catalog No.** E-AB-10482

*Note:* Centrifuge before opening to ensure complete recovery of vial contents.

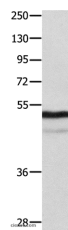
### Description

<b>Reactivity</b>	Human,Mouse,Rat
<b>Immunogen</b>	Recombinant protein of human NAP1L1
<b>Host</b>	Rabbit
<b>Isotype</b>	IgG
<b>Purification</b>	Affinity purification
<b>Conjugation</b>	Unconjugated
<b>Buffer</b>	PBS with 0.05% sodium azide and 50% glycerol, PH7.4

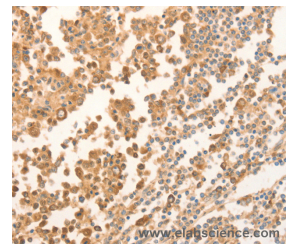
### Applications Recommended Dilution

<b>WB</b>	1:1000-1:5000
<b>IHC</b>	1:50-1:200

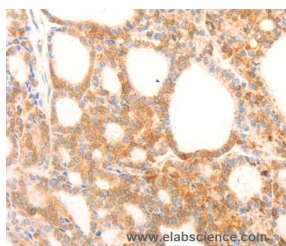
### Data



Western Blot analysis of Mouse thymus tissue using NAP1L1 Polyclonal Antibody at dilution of 1:1000  
**Calculated Mw:45kDa**



Immunohistochemistry of paraffin-embedded Human tonsil using NAP1L1 Polyclonal Antibody at dilution of 1:70



Immunohistochemistry of paraffin-embedded Human thyroid cancer using NAP1L1 Polyclonal Antibody at dilution of 1:70

### Preparation & Storage

**Storage** Store at -20°C. Avoid freeze / thaw cycles.

### Background

### For Research Use Only

This gene encodes a member of the nucleosome assembly protein (NAP) family. This protein participates in DNA replication and may play a role in modulating chromatin formation and contribute to the regulation of cell proliferation. Alternative splicing of this gene results in several transcript variants; however, not all have been fully described.