

# NME1 Polyclonal Antibody

Catalog Number:E-AB-10491



**Note:** Centrifuge before opening to ensure complete recovery of vial contents.

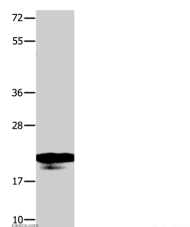
## Description

|                     |   |
|---------------------|---|
| <b>Reactivity</b>   | Human,Mouse,Rat                                     |
| <b>Immunogen</b>    | Recombinant protein of human NME1                   |
| <b>Host</b>         | Rabbit  |
| <b>Isotype</b>      | IgG   |
| <b>Purification</b> | Affinity purification                               |
| <b>Conjugation</b>  | Unconjugated  |
| <b>Formulation</b>  | PBS with 0.05% sodium azide and 50% glycerol, PH7.4 |

## Applications Recommended Dilution

|           |               |
|-----------|---------------|
| <b>WB</b> | 1:1000-1:5000 |
|-----------|---------------|

## Data



Western Blot analysis of A549 cell using NME1  
Polyclonal Antibody at dilution of 1:950  
**Calculated Mw:17kDa**

## Preparation & Storage

|                |   |
|----------------|---|
| <b>Storage</b> | Store at -20°C. Avoid freeze / thaw cycles. |
|----------------|---|

## Background

This gene (NME1) was identified because of its reduced mRNA transcript levels in highly metastatic cells. Nucleoside diphosphate kinase (NDK) exists as a hexamer composed of 'A' (encoded by this gene) and 'B' (encoded by NME2) isoforms. Mutations in this gene have been identified in aggressive neuroblastomas. Two transcript variants encoding different isoforms have been found for this gene. Co-transcription of this gene and the neighboring downstream gene (NME2) generates naturally-occurring transcripts (NME1-NME2), which encodes a fusion protein comprised of sequence sharing identity with each individual gene product.

## For Research Use Only

A Reliable Research Partner in Life Science and Medicine

Toll-free: 1-888-852-8623

Web: [www.elabscience.com](http://www.elabscience.com)

Tel: 1-832-243-6086

Email: [techsupport@elabscience.com](mailto:techsupport@elabscience.com)

Fax: 1-832-243-6017