

## ALS2CR11 Polyclonal Antibody

**Catalog No.** E-AB-10786

*Note:* Centrifuge before opening to ensure complete recovery of vial contents.

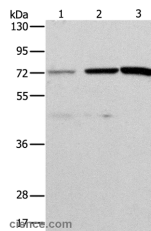
### Description

<b>Reactivity</b>	Human, Mouse
<b>Immunogen</b>	Recombinant protein of human ALS2CR11
<b>Host</b>	Rabbit
<b>Isotype</b>	IgG
<b>Purification</b>	Affinity purification
<b>Conjugation</b>	Unconjugated
<b>Buffer</b>	PBS with 0.05% sodium azide and 50% glycerol, PH7.4

### Applications Recommended Dilution

**WB** 1:200-1:1000

### Data



Western Blot analysis of HeLa and SKOV3 cell, Mouse liver tissue using ALS2CR11 Polyclonal Antibody at dilution of 1:500

**Calculated Mw:71kDa**

### Preparation & Storage

**Storage** Store at -20°C. Avoid freeze / thaw cycles.

### Background

This gene has highly expression in digestive system component and liver, biliary system. It may have four isoforms that produced by alternative splicing. Transcription profiling of human mesenchymal stem cells transformed with lentiviral vectors of TERT, E6, SV40 and RAS.

### For Research Use Only