

ARHGEF5 Polyclonal Antibody

Catalog Number:E-AB-10830

Note: Centrifuge before opening to ensure complete recovery of vial contents.

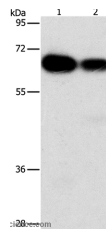
Description

Reactivity	Human
Immunogen	Recombinant protein of human ARHGEF5
Host	Rabbit
Isotype	IgG
Purification	Affinity purification
Conjugation	Unconjugated
Formulation	PBS with 0.05% sodium azide and 50% glycerol, PH7.4

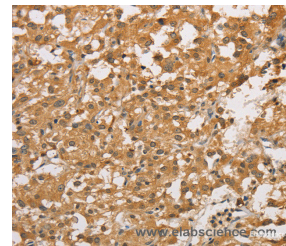
Applications Recommended Dilution

WB	1:1000-1:5000
IHC	1:50-1:200

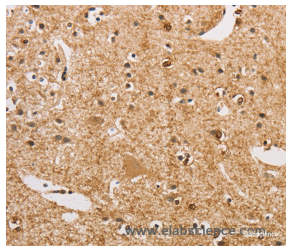
Data



Western Blot analysis of HeLa and K562 cell using ARHGEF5 Polyclonal Antibody at dilution of 1:1150
Calculated Mw:60kDa



Immunohistochemistry of paraffin-embedded Human thyroid cancer using ARHGEF5 Polyclonal Antibody at dilution of 1:50



Immunohistochemistry of paraffin-embedded Human brain using ARHGEF5 Polyclonal Antibody at dilution of 1:50

Preparation & Storage

Storage Store at -20°C. Avoid freeze / thaw cycles.

Background

Rho GTPases play a fundamental role in numerous cellular processes initiated by extracellular stimuli that work through G protein coupled receptors. The encoded protein may form a complex with G proteins and stimulate Rho-dependent signals. This protein may be involved in the control of cytoskeletal organization.

For Research Use Only

A Reliable Research Partner in Life Science and Medicine

Toll-free: 1-888-852-8623

Web: www.elabscience.com

Tel: 1-832-243-6086

Email: techsupport@elabscience.com

Fax: 1-832-243-6017