

INTS10 Polyclonal Antibody

Catalog No. E-AB-10863

Note: Centrifuge before opening to ensure complete recovery of vial contents.

Description

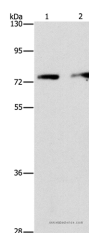
Reactivity	Human, Mouse
Immunogen	Recombinant protein of human INTS10
Host	Rabbit
Isotype	IgG
Purification	Affinity purification
Conjugation	Unconjugated
Buffer	PBS with 0.05% sodium azide and 50% glycerol, PH7.4

Applications

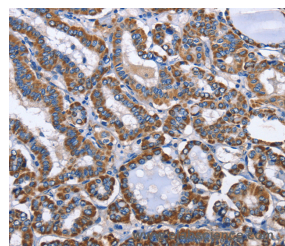
Recommended Dilution

WB	1:200-1:1000
IHC	1:50-1:200

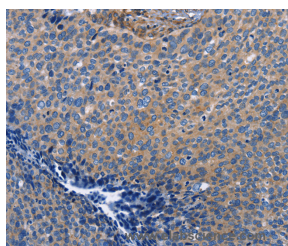
Data



Western Blot analysis of HeLa and hepG2 cell using INTS10 Polyclonal Antibody at dilution of 1:475
Calculated Mw:82kDa



Immunohistochemistry of paraffin-embedded Human thyroid cancer using INTS10 Polyclonal Antibody at dilution of 1:50



Immunohistochemistry of paraffin-embedded Human cervical cancer using INTS10 Polyclonal Antibody at dilution of 1:50

Preparation & Storage

Storage Store at -20°C. Avoid freeze / thaw cycles.

Background

For Research Use Only

INTS10 is a subunit of the Integrator complex, which associates with the C-terminal domain of RNA polymerase II large subunit and mediates 3-prime end processing of small nuclear RNAs U1. INTS10 (integrator complex subunit 10) is also known as INT10 and is a 710 amino acid protein that is localized to the nucleus. INTS10 is a component of the integrator complex and, as such, is thought to aid in the regulation of 3'-end processing of spliceosomal U1 and U2 snRNAs.

For Research Use Only

Toll-free: 1-888-852-8623

Web: www.elabscience.com

Tel: 1-832-243-6086

Email: techsupport@elabscience.com

Fax: 1-832-243-6017