

## GRK3 Polyclonal Antibody

Catalog No. E-AB-10892

**Note:** Centrifuge before opening to ensure complete recovery of vial contents.

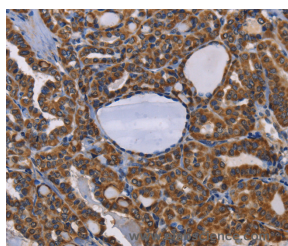
### Description

<b>Reactivity</b>	Human, Rat
<b>Immunogen</b>	Recombinant protein of human ADRBK2
<b>Host</b>	Rabbit
<b>Isotype</b>	IgG
<b>Purification</b>	Affinity purification
<b>Conjugation</b>	Unconjugated
<b>Buffer</b>	PBS with 0.05% sodium azide and 50% glycerol, PH7.4

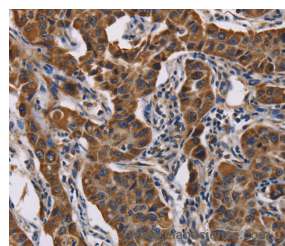
### Applications Recommended Dilution

**IHC** 1:50-1:200

### Data



Immunohistochemistry of paraffin-embedded Human thyroid cancer tissue using GRK3 Polyclonal Antibody at dilution 1:50



Immunohistochemistry of paraffin-embedded Human lung cancer tissue using GRK3 Polyclonal Antibody at dilution 1:50

### Preparation & Storage

**Storage** Store at -20°C. Avoid freeze / thaw cycles.

### Background

The beta-adrenergic receptor kinase specifically phosphorylates the agonist-occupied form of the beta-adrenergic and related G protein-coupled receptors. Overall, the beta adrenergic receptor kinase 2 has 85% amino acid similarity with beta adrenergic receptor kinase 1, with the protein kinase catalytic domain having 95% similarity. These data suggest the existence of a family of receptor kinases which may serve broadly to regulate receptor function.

### For Research Use Only