

MAP4K2 Polyclonal Antibody

Catalog No. E-AB-10897

Note: Centrifuge before opening to ensure complete recovery of vial contents.

Description

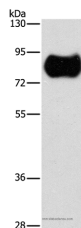
| | |
|---------------------|---|
| Reactivity | Human, Mouse |
| Immunogen | Recombinant protein of human MAP4K2 |
| Host | Rabbit |
| Isotype | IgG |
| Purification | Affinity purification |
| Conjugation | Unconjugated |
| Buffer | PBS with 0.05% sodium azide and 50% glycerol, PH7.4 |

Applications

Recommended Dilution

WB 1:1000-1:5000

Data



Western Blot analysis of Human fetal brain tissue using
MAP4K2 Polyclonal Antibody at dilution of 1:900
Calculated Mw:92kDa

Preparation & Storage

Storage Store at -20°C. Avoid freeze / thaw cycles.

Background

The protein encoded by this gene is a member of the serine/threonine protein kinase family. Although this kinase is found in many tissues, its expression in lymphoid follicles is restricted to the cells of germinal centre, where it may participate in B-cell differentiation. This kinase can be activated by TNF-alpha, and has been shown to specifically activate MAP kinases. This kinase is also found to interact with TNF receptor-associated factor 2 (TRAF2), which is involved in the activation of MAP3K1/MEKK1.

For Research Use Only