

# PIP5K1B Polyclonal Antibody

Catalog Number:E-AB-10952

**Note:** Centrifuge before opening to ensure complete recovery of vial contents.

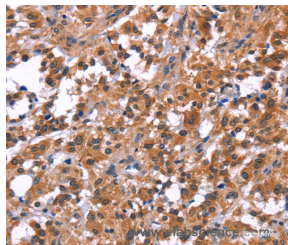
## Description

<b>Reactivity</b>	Human,Mouse,Rat
<b>Immunogen</b>	Recombinant protein of human PIP5K1B
<b>Host</b>	Rabbit
<b>Isotype</b>	IgG
<b>Purification</b>	Affinity purification
<b>Conjugation</b>	Unconjugated
<b>Formulation</b>	PBS with 0.05% sodium azide and 50% glycerol, PH7.4

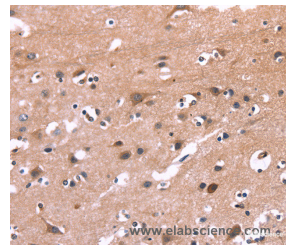
## Applications Recommended Dilution

<b>IHC</b>	1:50-1:200
------------	------------

## Data



Immunohistochemistry of paraffin-embedded Human thyroid cancer tissue using PIP5K1B Polyclonal Antibody at dilution 1:30



Immunohistochemistry of paraffin-embedded Human brain tissue using PIP5K1B Polyclonal Antibody at dilution 1:30

## Preparation & Storage

**Storage** Store at -20°C. Avoid freeze / thaw cycles.

## Background

Phosphatidylinositol-4-phosphate-5-kinase (PIP5K) synthesizes phosphatidylinositol-4,5-bisphosphate, which regulates various processes including cell proliferation, survival, membrane trafficking, and cytoskeletal organization. The PIPK family is divided into type I, type II and type III. Each type of the PIPK family phosphorylate distinct substrates and they contain an activation loop, which determines their enzymatic specificity and subcellular targeting. The phosphatidylinositol-4-phosphate-5-kinase type I consists of three members, PIPK I  $\alpha$ ,  $\beta$ , and  $\gamma$ , which are characterized by phosphorylating PI4P on the 5-hydroxyl. PIPK I  $\alpha$  (designated PIPK I  $\beta$  in mouse) is expressed in brain tissue. PIPK I  $\beta$ , designated PIPK I  $\alpha$  in mouse, is also called STM7. PIPK I  $\gamma$  has two variants produced by alternative splicing which are expressed in lung, brain, and kidneys.

## For Research Use Only

A Reliable Research Partner in Life Science and Medicine

Toll-free: 1-888-852-8623

Web: [www.elabscience.com](http://www.elabscience.com)

Tel: 1-832-243-6086

Email: [techsupport@elabscience.com](mailto:techsupport@elabscience.com)

Fax: 1-832-243-6017