

**Note:** Centrifuge before opening to ensure complete recovery of vial contents.

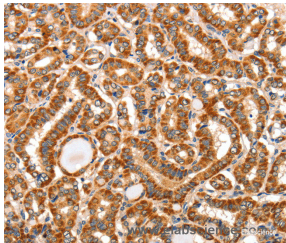
## Description

<b>Reactivity</b>	Human
<b>Immunogen</b>	Recombinant protein of human AIM2
<b>Host</b>	Rabbit
<b>Isotype</b>	IgG
<b>Purification</b>	Affinity purification
<b>Conjugation</b>	Unconjugated
<b>Formulation</b>	PBS with 0.05% sodium azide and 50% glycerol, PH7.4

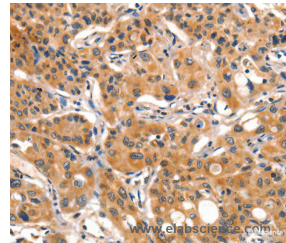
## Applications Recommended Dilution

<b>IHC</b>	1:50-1:200
------------	------------

## Data



Immunohistochemistry of paraffin-embedded Human thyroid cancer tissue using AIM2 Polyclonal Antibody at dilution 1:60



Immunohistochemistry of paraffin-embedded Human lung cancer tissue using AIM2 Polyclonal Antibody at dilution 1:60

## Preparation & Storage

**Storage** Store at -20°C. Avoid freeze / thaw cycles.

## Background

Interferon-inducible protein AIM2 (Absent in melanoma 2) is a 343 amino acid protein belonging to the HIN-200 family. Induced by IFN- $\gamma$ , AIM2 is thought to act as a tumor suppressor by repressing NF $\kappa$ B transcriptional activity. Localized to the nucleus, AIM2 contains one DAPIN domain and one HIN-200 domain. The DAPIN domain is composed mostly of  $\alpha$ -helices and is a protein-protein interaction domain capable of binding other DAPIN domains. The HIN-200 domain has been shown to bind directly to DNA, which, along with the binding of another protein ASC, results in the activation of Caspase-1.

## For Research Use Only

A Reliable Research Partner in Life Science and Medicine

Toll-free: 1-888-852-8623

Web: [www.elabscience.com](http://www.elabscience.com)

Tel: 1-832-243-6086

Email: [techsupport@elabscience.com](mailto:techsupport@elabscience.com)

Fax: 1-832-243-6017