

# ANKHD1 Polyclonal Antibody

Catalog Number: E-AB-10979



**Note:** Centrifuge before opening to ensure complete recovery of vial contents.

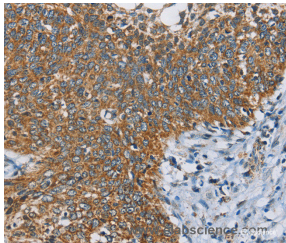
## Description

<b>Reactivity</b>	Human
<b>Immunogen</b>	Recombinant protein of human ANKHD1
<b>Host</b>	Rabbit
<b>Isotype</b>	IgG
<b>Purification</b>	Affinity purification
<b>Conjugation</b>	Unconjugated
<b>Formulation</b>	PBS with 0.05% sodium azide and 50% glycerol, PH7.4

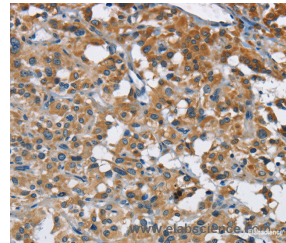
## Applications Recommended Dilution

<b>IHC</b>	1:50-1:200
------------	------------

## Data



Immunohistochemistry of paraffin-embedded Human cervical cancer tissue using ANKHD1 Polyclonal Antibody at dilution 1:40



Immunohistochemistry of paraffin-embedded Human thyroid cancer tissue using ANKHD1 Polyclonal Antibody at dilution 1:40

## Preparation & Storage

**Storage** Store at -20°C. Avoid freeze / thaw cycles.

## Background

This gene encodes a protein with multiple ankyrin repeat domains and a single KH-domain. The protein is thought to function as a scaffolding protein, and it may be involved in the regulation of caspases and thereby play an antiapoptotic role in cell survival. Alternative splicing results in multiple transcript variants, one of which generates a fusion transcript (MASK-BP3) with the downstream eIF4E-binding protein 3 (EIF4EBP3) gene, resulting in a protein comprised of the ANKHD1 sequence for the majority of the protein and a different C-terminus due to an alternate reading frame for the EIF4EBP3 segments.

## For Research Use Only

A Reliable Research Partner in Life Science and Medicine

Toll-free: 1-888-852-8623

Web: [www.elabscience.com](http://www.elabscience.com)

Tel: 1-832-243-6086

Email: [techsupport@elabscience.com](mailto:techsupport@elabscience.com)

Fax: 1-832-243-6017