

PPIB Polyclonal Antibody

Catalog Number:E-AB-11114

Note: Centrifuge before opening to ensure complete recovery of vial contents.

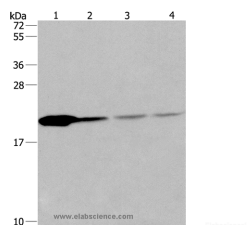
Description

Reactivity	Human,Mouse,Rat
Immunogen	Recombinant protein of human PPIB
Host	Rabbit
Isotype	IgG
Purification	Affinity purification
Conjugation	Unconjugated
Formulation	PBS with 0.05% sodium azide and 50% glycerol, PH7.4

Applications Recommended Dilution

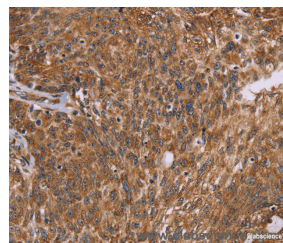
WB	1:500-1:2000
IHC	1:50-1:200

Data

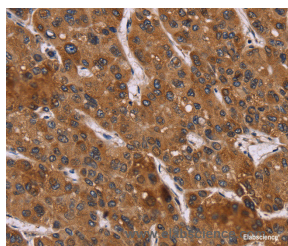


Western Blot analysis of Human fetal liver tissue and 293T cell, Human liver cancer tissue and hela cell using PPIB Polyclonal Antibody at dilution of 1:500

Calculated Mw:24kDa



Immunohistochemistry of paraffin-embedded Human ovarian cancer using PPIB Polyclonal Antibody at dilution of 1:45



Immunohistochemistry of paraffin-embedded Human liver cancer using PPIB Polyclonal Antibody at dilution of 1:45

Preparation & Storage

Storage Store at -20°C. Avoid freeze / thaw cycles.

Background

The protein encoded by this gene is a cyclosporine-binding protein and is mainly located within the endoplasmic reticulum. It is associated with the secretory pathway and released in biological fluids. This protein can bind to cells derived from T- and B-lymphocytes, and may regulate cyclosporine A-mediated immunosuppression. Variants have been

For Research Use Only

A Reliable Research Partner in Life Science and Medicine

Toll-free: 1-888-852-8623

Web: www.elabscience.com

Tel: 1-832-243-6086

Email: techsupport@elabscience.com

Fax: 1-832-243-6017

PPIB Polyclonal Antibody

Catalog Number:E-AB-11114



identified in this protein that give rise to recessive forms of osteogenesis imperfecta.

For Research Use Only

A Reliable Research Partner in Life Science and Medicine

Toll-free: 1-888-852-8623

Web: www.elabscience.com

Tel: 1-832-243-6086

Email: techsupport@elabscience.com

Fax: 1-832-243-6017