

# GABPB2 Polyclonal Antibody

Catalog Number:E-AB-11251

**Note:** Centrifuge before opening to ensure complete recovery of vial contents.

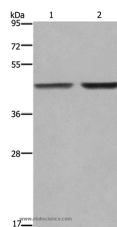
## Description

<b>Reactivity</b>	Human,Mouse
<b>Immunogen</b>	Recombinant protein of human GABPB2
<b>Host</b>	Rabbit
<b>Isotype</b>	IgG
<b>Purification</b>	Affinity purification
<b>Conjugation</b>	Unconjugated
<b>Formulation</b>	PBS with 0.05% sodium azide and 50% glycerol, PH7.4

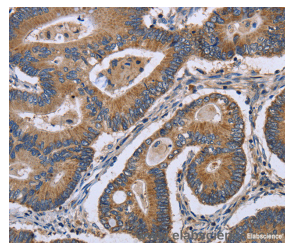
## Applications Recommended Dilution

<b>WB</b>	1:500-1:2000
<b>IHC</b>	1:50-1:200

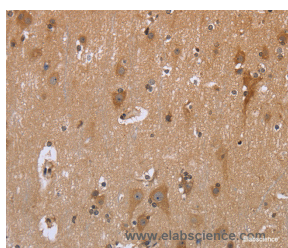
## Data



Western Blot analysis of MCF-7 and 231 cell using GABPB2 Polyclonal Antibody at dilution of 1:550  
**Calculated Mw:49kDa**



Immunohistochemistry of paraffin-embedded Human colon cancer using GABPB2 Polyclonal Antibody at dilution of 1:30



Immunohistochemistry of paraffin-embedded Human brain using GABPB2 Polyclonal Antibody at dilution of 1:30

## Preparation & Storage

**Storage** Store at -20°C. Avoid freeze / thaw cycles.

## Background

The GABPB gene encodes at least 4 beta subunit isoforms that were originally thought to be encoded by 2 separate genes, GABPB1 and GABPB2. The gene on Hsa1q was named GABPB2 and the gene on Hsa15q was named GABPB1. The predicted GABPB1 and GABPB2 subunits contain 383 and 347 amino acids, respectively, and are highly homologous.

## For Research Use Only

A Reliable Research Partner in Life Science and Medicine

Toll-free: 1-888-852-8623

Web: [www.elabscience.com](http://www.elabscience.com)

Tel: 1-832-243-6086

Email: [techsupport@elabscience.com](mailto:techsupport@elabscience.com)

Fax: 1-832-243-6017