

GYS2 Polyclonal Antibody

Catalog Number:E-AB-11276

Note: Centrifuge before opening to ensure complete recovery of vial contents.

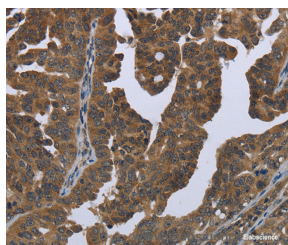
Description

Reactivity	Human,Mouse,Rat
Immunogen	Recombinant protein of human GYS2
Host	Rabbit
Isotype	IgG
Purification	Affinity purification
Conjugation	Unconjugated
Formulation	PBS with 0.05% sodium azide and 50% glycerol, PH7.4

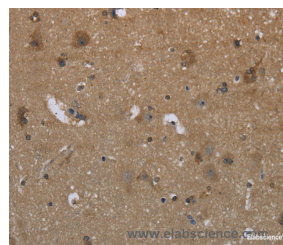
Applications Recommended Dilution

IHC	1:100-1:300
------------	-------------

Data



Immunohistochemistry of paraffin-embedded Human ovarian cancer tissue using GYS2 Polyclonal Antibody at dilution 1:50



Immunohistochemistry of paraffin-embedded Human brain tissue using GYS2 Polyclonal Antibody at dilution 1:50

Preparation & Storage

Storage Store at -20°C. Avoid freeze / thaw cycles.

Background

The protein encoded by this gene, liver glycogen synthase, catalyzes the rate-limiting step in the synthesis of glycogen - the transfer of a glucose molecule from UDP-glucose to a terminal branch of the glycogen molecule. Mutations in this gene cause glycogen storage disease type 0 (GSD-0) - a rare type of early childhood fasting hypoglycemia with decreased liver glycogen content.

For Research Use Only

A Reliable Research Partner in Life Science and Medicine

Toll-free: 1-888-852-8623

Web: www.elabscience.com

Tel: 1-832-243-6086

Email: techsupport@elabscience.com

Fax: 1-832-243-6017