

**Note:** Centrifuge before opening to ensure complete recovery of vial contents.

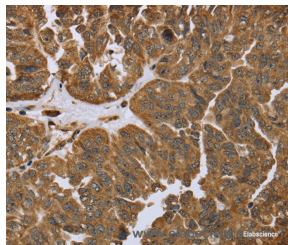
## Description

<b>Reactivity</b>	Human,Mouse,Rat
<b>Immunogen</b>	Recombinant protein of human IKBIP
<b>Host</b>	Rabbit
<b>Isotype</b>	IgG
<b>Purification</b>	Affinity purification
<b>Conjugation</b>	Unconjugated
<b>Formulation</b>	PBS with 0.05% sodium azide and 50% glycerol, PH7.4

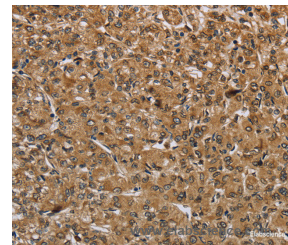
## Applications Recommended Dilution

<b>IHC</b>	1:50-1:200
------------	------------

## Data



Immunohistochemistry of paraffin-embedded Human ovarian cancer tissue using IKBIP Polyclonal Antibody at dilution 1:40



Immunohistochemistry of paraffin-embedded Human prostate cancer tissue using IKBIP Polyclonal Antibody at dilution 1:40

## Preparation & Storage

**Storage** Store at -20°C. Avoid freeze / thaw cycles.

## Background

IKIP (Inhibitor of nuclear factor kappa-B kinase-interacting protein, IKK-interacting protein) is a single-pass membrane protein that shares a common promoter with APAF1. APAF1 and IKIP are both induced by X irradiation, however, the two gene products are transcribed in different directions. The IKIP gene is believed to be a target for p53 as expression of IKIP has been shown to promote apoptosis. IKIP has four known isoforms, three of which are found traversing the endoplasmic reticulum membrane. IKIP isoform 4 has a deletion of the transmembrane region which leads to a homogenous distribution of the protein within the cell. The IKIP gene products are expressed in vascular endothelial cells, while the isoform 4 has also been detected in lung, kidney, spleen, thymus and skeletal muscle.

## For Research Use Only

A Reliable Research Partner in Life Science and Medicine

Toll-free: 1-888-852-8623

Web: [www.elabscience.com](http://www.elabscience.com)

Tel: 1-832-243-6086

Email: [techsupport@elabscience.com](mailto:techsupport@elabscience.com)

Fax: 1-832-243-6017