

KCNK17 Polyclonal Antibody

Catalog No. E-AB-11346

Note: Centrifuge before opening to ensure complete recovery of vial contents.

Description

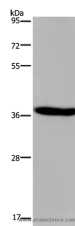
Reactivity	Human
Immunogen	Recombinant protein of human KCNK17
Host	Rabbit
Isotype	IgG
Purification	Affinity purification
Conjugation	Unconjugated
Buffer	PBS with 0.05% sodium azide and 50% glycerol, PH7.4

Applications

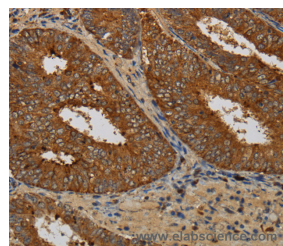
Recommended Dilution

WB 1:500-1:2000,
IHC 1:100-1:300

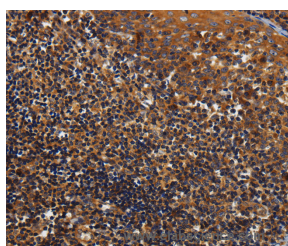
Data



Western Blot analysis of LO2 cell using KCNK17 Polyclonal Antibody at dilution of 1:300
Calculated Mw:37kDa



Immunohistochemistry of paraffin-embedded Human colon cancer using KCNK17 Polyclonal Antibody at dilution of 1:60



Immunohistochemistry of paraffin-embedded Human tonsil using KCNK17 Polyclonal Antibody at dilution of 1:60

Preparation & Storage

Storage Store at -20°C. Avoid freeze / thaw cycles.

Background

For Research Use Only

The protein encoded by this gene belongs to the family of potassium channel proteins containing two pore-forming P domains. This channel is an open rectifier which primarily passes outward current under physiological K⁺ concentrations. This gene is activated at alkaline pH. Alternatively spliced transcript variants encoding different isoforms have been found for this gene.