

OVAL Polyclonal Antibody

Catalog Number:E-AB-11387



Note: Centrifuge before opening to ensure complete recovery of vial contents.

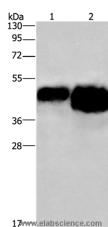
Description

Reactivity	Chicken
Immunogen	Recombinant protein of Chicken OVAL
Host	Rabbit
Isotype	IgG
Purification	Affinity purification
Conjugation	Unconjugated
Formulation	PBS with 0.05% sodium azide and 50% glycerol, PH7.4

Applications Recommended Dilution

WB	1:500-1:2000
-----------	--------------

Data



Western Blot analysis of 0.4ug and 0.8ug OVAL protein using OVAL Polyclonal Antibody at dilution of 1:500

Calculated Mw:43kDa

Preparation & Storage

Storage Store at -20°C. Avoid freeze / thaw cycles.

Background

Ovalbumin (abbreviated OVA) is the main protein found in egg white, making up 60-65% of the total protein. Ovalbumin displays sequence and three-dimensional homology to the serpin superfamily, but unlike most serpins it is not a serine protease inhibitor. It is presumed to be a storage protein.

For Research Use Only

A Reliable Research Partner in Life Science and Medicine

Toll-free: 1-888-852-8623

Web: www.elabscience.com

Tel: 1-832-243-6086

Email: techsupport@elabscience.com

Fax: 1-832-243-6017