

# PARP11 Polyclonal Antibody

Catalog Number:E-AB-11474

**Note:** Centrifuge before opening to ensure complete recovery of vial contents.

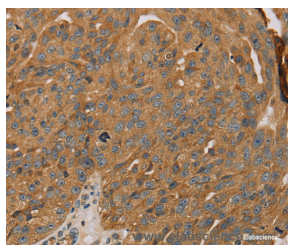
## Description

<b>Reactivity</b>	Human,Mouse
<b>Immunogen</b>	Recombinant protein of human PARP11
<b>Host</b>	Rabbit
<b>Isotype</b>	IgG
<b>Purification</b>	Affinity purification
<b>Conjugation</b>	Unconjugated
<b>Formulation</b>	PBS with 0.05% sodium azide and 50% glycerol, PH7.4

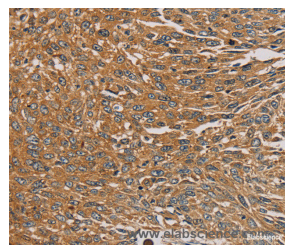
## Applications Recommended Dilution

<b>IHC</b>	1:50-1:200
------------	------------

## Data



Immunohistochemistry of paraffin-embedded Human breast cancer tissue using PARP11 Polyclonal Antibody at dilution 1:30



Immunohistochemistry of paraffin-embedded Human lung cancer tissue using PARP11 Polyclonal Antibody at dilution 1:30

## Preparation & Storage

<b>Storage</b>	Store at -20°C. Avoid freeze / thaw cycles.
----------------	---

## Background

Poly(ADP-ribosylation) is a method of DNA damage-dependent posttranslational modification that helps to rescue injured proliferating cells from cell death. The PARP (poly(ADP-ribose) polymerase) proteins comprise a superfamily of enzymes that functionally modify histones and other nuclear proteins, thereby preventing cell death. PARPs use NAD<sup>+</sup> as a substrate to catalytically transfer ADP-ribose residues onto protein acceptors; a process that, when repeated multiple times, leads to the formation of poly(ADPribose) chains on the protein.

## For Research Use Only

A Reliable Research Partner in Life Science and Medicine

Toll-free: 1-888-852-8623

Web: [www.elabscience.com](http://www.elabscience.com)

Tel: 1-832-243-6086

Email: [techsupport@elabscience.com](mailto:techsupport@elabscience.com)

Fax: 1-832-243-6017