

NUP85 Polyclonal Antibody

Catalog No. E-AB-11476

Note: Centrifuge before opening to ensure complete recovery of vial contents.

Description

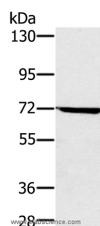
Reactivity	Human,Mouse,Rat
Immunogen	Recombinant protein of human NUP85
Host	Rabbit
Isotype	IgG
Purification	Affinity purification
Conjugation	Unconjugated
Buffer	PBS with 0.05% sodium azide and 50% glycerol, PH7.4

Applications

Recommended Dilution

WB 1:500-1:2000

Data



Western Blot analysis of HeLa cell using NUP85 Polyclonal Antibody at dilution of 1:300
Calculated Mw:75kDa

Preparation & Storage

Storage Store at -20°C. Avoid freeze / thaw cycles.

Background

Bidirectional transport of macromolecules between the cytoplasm and nucleus occurs through nuclear pore complexes (NPCs) embedded in the nuclear envelope. NPCs are composed of subcomplexes, and NUP85 is part of one such subcomplex, Nup107-160.

For Research Use Only