

# RASSF7 Polyclonal Antibody

Catalog Number: E-AB-11525

1 Publications



**Note:** Centrifuge before opening to ensure complete recovery of vial contents.

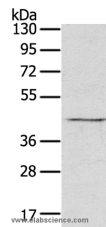
## Description

<b>Reactivity</b>	Human
<b>Immunogen</b>	Recombinant protein of human RASSF7
<b>Host</b>	Rabbit
<b>Isotype</b>	IgG
<b>Purification</b>	Affinity purification
<b>Conjugation</b>	Unconjugated
<b>Formulation</b>	PBS with 0.05% sodium azide and 50% glycerol, PH7.4

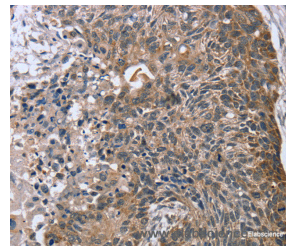
## Applications Recommended Dilution

<b>WB</b>	1:500-1:2000
<b>IHC</b>	1:25-1:100

## Data



Western Blot analysis of Raji cell using RASSF7 Polyclonal Antibody at dilution of 1:800  
**Calculated Mw:40kDa**



Immunohistochemistry of paraffin-embedded Human esophagus cancer using RASSF7 Polyclonal Antibody at dilution of 1:45

## Preparation & Storage

**Storage** Store at -20°C. Avoid freeze / thaw cycles.

## Background

RASSF7 (Ras association domain-containing protein 7), also designated HRAS1-related cluster protein 1, is a 373 amino acid protein that localizes to the centrosome. RASSF7, RASSF8, RASSF9 and RASSF10 are four evolutionary conserved proteins that are collectively known as the N-terminal RASSF family. Expressed in skin, neural tube and eye, RASSF7 is believed to play an essential role in mitosis. Further supporting its mitotic role, knockdown of *Xenopus* RASSF7 has been shown to influence cell failure to form mitotic spindle and also cause nuclear breakdown and apoptosis.

## For Research Use Only

A Reliable Research Partner in Life Science and Medicine

Toll-free: 1-888-852-8623

Web: [www.elabscience.com](http://www.elabscience.com)

Tel: 1-832-243-6086

Email: [techsupport@elabscience.com](mailto:techsupport@elabscience.com)

Fax: 1-832-243-6017