

# RGS22 Polyclonal Antibody

Catalog Number:E-AB-11537



**Note:** Centrifuge before opening to ensure complete recovery of vial contents.

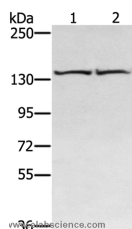
## Description

<b>Reactivity</b>	Human
<b>Immunogen</b>	Recombinant protein of human RGS22
<b>Host</b>	Rabbit
<b>Isotype</b>	IgG
<b>Purification</b>	Affinity purification
<b>Conjugation</b>	Unconjugated
<b>Formulation</b>	PBS with 0.05% sodium azide and 50% glycerol, PH7.4

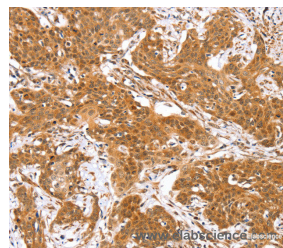
## Applications Recommended Dilution

<b>WB</b>	1:500-1:2000
<b>IHC</b>	1:25-1:100

## Data



Western Blot analysis of Hela and hepg2 cell using RGS22 Polyclonal Antibody at dilution of 1:400  
**Calculated Mw:147kDa**



Immunohistochemistry of paraffin-embedded Human cervical cancer using RGS22 Polyclonal Antibody at dilution of 1:40

## Preparation & Storage

**Storage** Store at -20°C. Avoid freeze / thaw cycles.

## Background

RGS22 (regulator of G-protein signaling 22), also known as FLJ75004, PRTD-NY2, FLJ40080, MGC102908 or DKFZp434I092, is a novel 1264 amino acid regulator of G-protein signaling specific to testis. RGS22 inhibits signal transduction and contains two isoforms as a result of alternative splicing. RGS22 is found in spermatogenic cells and Leydig cells, and may be involved in the translocation of GNA13 from the cytoplasm to the nucleus during spermiogenesis. RGS22 contains two RGS domains: RGS1 and RGS2, and the gene encoding RGS22 maps to human chromosome 8q22.2.

## For Research Use Only

A Reliable Research Partner in Life Science and Medicine

Toll-free: 1-888-852-8623

Web: [www.elabscience.com](http://www.elabscience.com)

Tel: 1-832-243-6086

Email: [techsupport@elabscience.com](mailto:techsupport@elabscience.com)

Fax: 1-832-243-6017