

SRGAP3 Polyclonal Antibody

Catalog Number: E-AB-11600

1 Publications



Note: Centrifuge before opening to ensure complete recovery of vial contents.

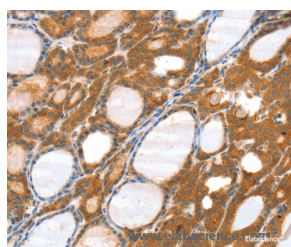
Description

Reactivity	Human, Mouse
Immunogen	Recombinant protein of human SRGAP3
Host	Rabbit
Isotype	IgG
Purification	Affinity purification
Conjugation	Unconjugated
Formulation	PBS with 0.05% sodium azide and 50% glycerol, PH7.4

Applications Recommended Dilution

IHC	1:25-1:100
------------	------------

Data



Immunohistochemistry of paraffin-embedded Human thyroid cancer tissue using SRGAP3 Polyclonal Antibody at dilution 1:40

Preparation & Storage

Storage Store at -20°C. Avoid freeze / thaw cycles.

Background

SRGAP3 is a 1099 amino acid protein containing 1 FCH domain, 1 Rho-GAP domain and 1 SH3 domain. Expressed highly in brain, and in lower levels in kidney, WRP is thought to play a role in cell migration through its interaction with Cdc42 and Rac1. Cdc42 and Rac1 are two intracellular signaling proteins that regulate the multistep cell migration process. WRP downregulates Cdc42 and Rac1 activity, thereby impairing actin and microtubule dynamics, the formation of protrusions, and total cell migration. Defects in the gene encoding WRP have been linked to severe idiopathic mental retardation. Three isoforms of WRP exist as a result of alternative splicing events.

For Research Use Only

A Reliable Research Partner in Life Science and Medicine

Toll-free: 1-888-852-8623

Web: www.elabscience.com

Tel: 1-832-243-6086

Email: techsupport@elabscience.com

Fax: 1-832-243-6017