

RAB35 Polyclonal Antibody

Catalog Number:E-AB-12236

Note: Centrifuge before opening to ensure complete recovery of vial contents.

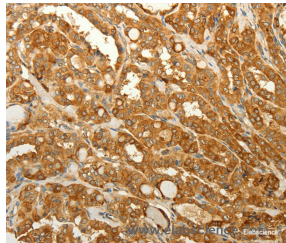
Description

Reactivity	Human,Mouse,Rat
Immunogen	Synthetic peptide of human RAB35
Host	Rabbit
Isotype	IgG
Purification	Affinity purification
Conjugation	Unconjugated
Formulation	PBS with 0.05% sodium azide and 50% glycerol, PH7.4

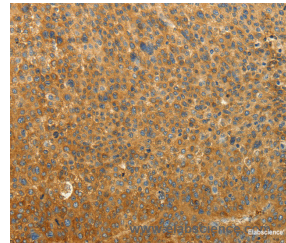
Applications Recommended Dilution

IHC	1:50-1:200
------------	------------

Data



Immunohistochemistry of paraffin-embedded Human thyroid cancer tissue using RAB35 Polyclonal Antibody at dilution 1:50



Immunohistochemistry of paraffin-embedded Human liver cancer tissue using RAB35 Polyclonal Antibody at dilution 1:50

Preparation & Storage

Storage Store at -20°C. Avoid freeze / thaw cycles.

Background

This gene encodes a small GTP-binding protein that belongs to the largest family within the Ras superfamily. Rab35 plays an important role in insulin-stimulated GLUT4 translocation in adipocytes. It is the target of TBC1D10A-C and that the intracellular accumulation of endosomal vesicles and impairs exosome secretion were occurred when inhibition of Rab35 function. The surface of oligodendroglia in a GTP-dependent manner was localized Rab35, it increases the density of vesicles, and may have a function in docking or tethering.

For Research Use Only

A Reliable Research Partner in Life Science and Medicine

Toll-free: 1-888-852-8623

Web: www.elabscience.com

Tel: 1-832-243-6086

Email: techsupport@elabscience.com

Fax: 1-832-243-6017