

CRMP1 Polyclonal Antibody

Catalog Number:E-AB-12333



Note: Centrifuge before opening to ensure complete recovery of vial contents.

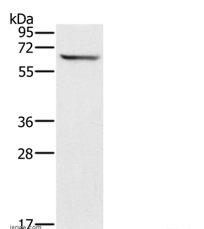
Description

Reactivity	Human,Mouse,Rat
Immunogen	Synthetic peptide of human CRMP1
Host	Rabbit
Isotype	IgG
Purification	Affinity purification
Conjugation	Unconjugated
Formulation	PBS with 0.05% sodium azide and 50% glycerol, PH7.4

Applications Recommended Dilution

WB	1:500-1:1000
-----------	--------------

Data



Western Blot analysis of Mouse brain tissue using
CRMP1 Polyclonal Antibody at dilution of 1:500
Calculated Mw:62kDa

Preparation & Storage

Storage	Store at -20°C. Avoid freeze / thaw cycles.
----------------	---

Background

Collapsin response mediator protein 1, encoded by the CRMP1 gene, is a human protein of the CRMP family. This gene encodes a member of a family of cytosolic phosphoproteins expressed exclusively in the nervous system. The encoded protein is thought to be a part of the semaphorin signal transduction pathway implicated in semaphorin-induced growth cone collapse during neural development. Alternative splicing results in multiple transcript variants. CRMP1 mediates reelin signaling in cortical neuronal migration. Mice deficient in CRMP1 exhibit impaired long-term potentiation and impaired spatial learning and memory. CRMP1 gene overlaps with another gene called EVC. CRMP1 has been shown to interact with DPYSL2.

For Research Use Only

A Reliable Research Partner in Life Science and Medicine

Toll-free: 1-888-852-8623

Web: www.elabscience.com

Tel: 1-832-243-6086

Email: techsupport@elabscience.com

Fax: 1-832-243-6017