

LDHC Polyclonal Antibody

Catalog No. E-AB-40359

Note: Centrifuge before opening to ensure complete recovery of vial contents.

Description

Reactivity	Human,Mouse,Rat
Immunogen	Recombinant Rat L-lactate dehydrogenase C chain protein
Host	Rabbit
Isotype	IgG
Purification	Antigen Affinity Purification
Conjugation	Unconjugated
Buffer	PBS with 0.05% Proclin300 and 50% glycerol, pH7.3.

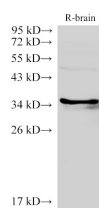
Applications

Recommended Dilution

WB 1:1000-1:3000

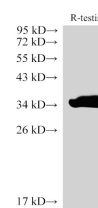
IHC 1:100-1:300

Data

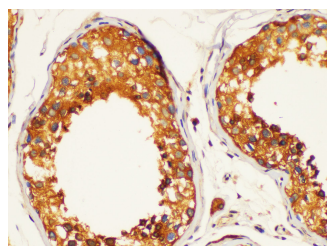


Western Blot analysis of Rat brain using LDHC Polyclonal Antibody at dilution of 1:2000

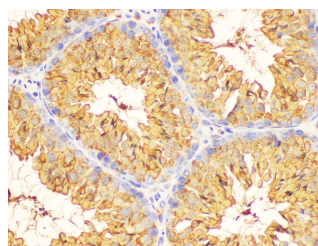
Observed Mw:35 kDa
Calculated Mw:35 kDa



Western Blot analysis of Rat testis using LDHC Polyclonal Antibody at dilution of 1:2000

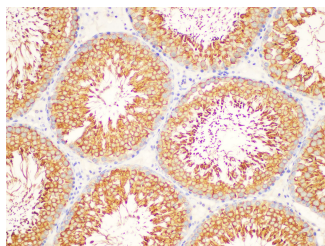


Immunohistochemistry of paraffin-embedded Human testis using LDHC Polyclonal Antibody at dilution of 1:200



Immunohistochemistry of paraffin-embedded Mouse testis using LDHC Polyclonal Antibody at dilution of 1:200

For Research Use Only



Immunohistochemistry of paraffin-embedded Rat testis using LDHC Polyclonal Antibody at dilution of 1:200

Preparation & Storage

Storage Store at -20°C. Avoid freeze / thaw cycles.

Background

Lactate dehydrogenase C catalyzes the conversion of L-lactate and NAD to pyruvate and NADH in the final step of anaerobic glycolysis. LDHC is testis-specific and belongs to the lactate dehydrogenase family. Two transcript variants have been detected which differ in the 5' untranslated region.

For Research Use Only