

MMP26 Polyclonal Antibody

Catalog Number:E-AB-12574



Note: Centrifuge before opening to ensure complete recovery of vial contents.

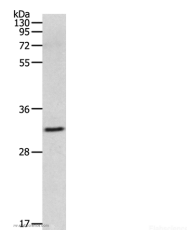
Description

Reactivity	Human
Immunogen	Synthetic peptide of human MMP26
Host	Rabbit
Isotype	IgG
Purification	Affinity purification
Conjugation	Unconjugated
Formulation	PBS with 0.05% sodium azide and 50% glycerol, PH7.4

Applications Recommended Dilution

WB	1:200-1:1000
-----------	--------------

Data



Western Blot analysis of 293T cell using MMP26 Polyclonal Antibody at dilution of 1:500
Calculated Mw:30kDa

Preparation & Storage

Storage Store at -20°C. Avoid freeze / thaw cycles.

Background

Proteins of the matrix metalloproteinase (MMP) family are involved in the breakdown of extracellular matrix in normal physiological processes, such as embryonic development, reproduction, and tissue remodeling, as well as in disease processes, such as arthritis and metastasis. Most MMP's are secreted as inactive proproteins which are activated when cleaved by extracellular proteinases. The encoded protein degrades type IV collagen, fibronectin, fibrinogen, casein, vitronectin, alpha 1-antitrypsin, alpha 2-macroglobulin, and insulin-like growth factor-binding protein 1, and activates MMP9 by cleavage. The protein differs from most MMP family members in that it lacks a conserved C-terminal protein domain.

For Research Use Only

A Reliable Research Partner in Life Science and Medicine

Toll-free: 1-888-852-8623

Web: www.elabscience.com

Tel: 1-832-243-6086

Email: techsupport@elabscience.com

Fax: 1-832-243-6017