

MYL9 Polyclonal Antibody

Catalog Number:E-AB-12582

Note: Centrifuge before opening to ensure complete recovery of vial contents.

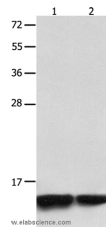
Description

Reactivity	Human,Mouse,Rat
Immunogen	Synthetic peptide of human MYL9
Host	Rabbit
Isotype	IgG
Purification	Affinity purification
Conjugation	Unconjugated
Formulation	PBS with 0.05% sodium azide and 50% glycerol, PH7.4

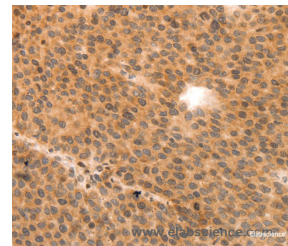
Applications Recommended Dilution

WB	1:1000-1:5000
IHC	1:50-1:200

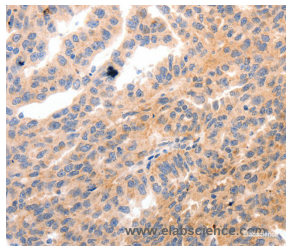
Data



Western Blot analysis of Jurkat and 231 cell using MYL9 Polyclonal Antibody at dilution of 1:1500
Calculated Mw:14kDa



Immunohistochemistry of paraffin-embedded Human liver cancer using MYL9 Polyclonal Antibody at dilution of 1:80



Immunohistochemistry of paraffin-embedded Human ovarian cancer using MYL9 Polyclonal Antibody at dilution of 1:80

Preparation & Storage

Storage Store at -20°C. Avoid freeze / thaw cycles.

Background

Myosin, a structural component of muscle, consists of two heavy chains and four light chains. The protein encoded by this gene is a myosin light chain that may regulate muscle contraction by modulating the ATPase activity of myosin heads. The encoded protein binds calcium and is activated by myosin light chain kinase. Two transcript variants encoding different isoforms have been found for this gene.

For Research Use Only

A Reliable Research Partner in Life Science and Medicine

Toll-free: 1-888-852-8623

Web: www.elabscience.com

Tel: 1-832-243-6086

Email: techsupport@elabscience.com

Fax: 1-832-243-6017