

SLC1A4 Polyclonal Antibody

Catalog Number:E-AB-12641

Note: Centrifuge before opening to ensure complete recovery of vial contents.

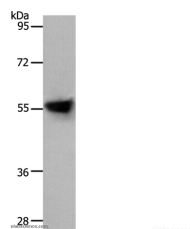
Description

Reactivity	Human,Mouse
Immunogen	Synthetic peptide of human SLC1A4
Host	Rabbit
Isotype	IgG
Purification	Affinity purification
Conjugation	Unconjugated
Formulation	PBS with 0.05% sodium azide and 50% glycerol, PH7.4

Applications Recommended Dilution

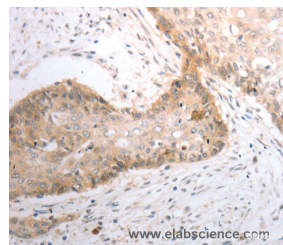
WB	1:500-1:2000
IHC	1:25-1:100

Data



Western Blot analysis of Human liver cancer tissue using SLC1A4 Polyclonal Antibody at dilution of 1:800

Calculated Mw:56kDa



Immunohistochemistry of paraffin-embedded Human cervical cancer using SLC1A4 Polyclonal Antibody at dilution of 1:40

Preparation & Storage

Storage Store at -20°C. Avoid freeze / thaw cycles.

Background

Neutral amino acid transporter A is a protein that in humans is encoded by the SLC1A4 gene. In melanocytic cells SLC1A4 gene expression may be regulated by MITF. ASCT1 does not transport glutamate or aspartate but alanine, serine, cysteine, and threonine instead. ASCT1 transporter functions primarily as an amino acid exchanger. Transport is associated with a chloride channel activity that is thermodynamically uncoupled from amino acid transport.

For Research Use Only

A Reliable Research Partner in Life Science and Medicine

Toll-free: 1-888-852-8623

Web: www.elabscience.com

Tel: 1-832-243-6086

Email: techsupport@elabscience.com

Fax: 1-832-243-6017