

CEACAM6 Polyclonal Antibody

Catalog Number:E-AB-12782

Note: Centrifuge before opening to ensure complete recovery of vial contents.

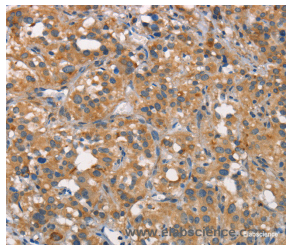
Description

Reactivity	Human
Immunogen	Synthetic peptide of human CEACAM6
Host	Rabbit
Isotype	IgG
Purification	Affinity purification
Conjugation	Unconjugated
Formulation	PBS with 0.05% sodium azide and 50% glycerol, PH7.4

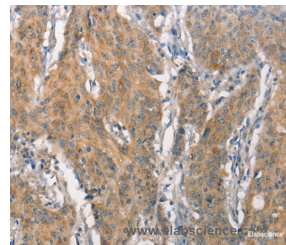
Applications Recommended Dilution

IHC	1:50-1:200
------------	------------

Data



Immunohistochemistry of paraffin-embedded Human thyroid cancer tissue using CEACAM6 Polyclonal Antibody at dilution 1:50



Immunohistochemistry of paraffin-embedded Human gastric cancer tissue using CEACAM6 Polyclonal Antibody at dilution 1:50

Preparation & Storage

Storage Store at -20°C. Avoid freeze / thaw cycles.

Background

Carcinoembryonic antigen (CEA; MIM 114890) is one of the most widely used tumor markers in serum immunoassay determinations of carcinoma. An apparent lack of absolute cancer specificity for CEA probably results in part from the presence in normal and neoplastic tissues of antigens that share antigenic determinants with the 180-kD form of CEA (Barnett et al., 1988 [PubMed 3220478]). For background information on the CEA family of genes, see CEACAM1 (MIM 109770).

For Research Use Only

A Reliable Research Partner in Life Science and Medicine

Toll-free: 1-888-852-8623

Web: www.elabscience.com

Tel: 1-832-243-6086

Email: techsupport@elabscience.com

Fax: 1-832-243-6017