

## FZD6 Polyclonal Antibody

Catalog No. E-AB-12926

**Note:** Centrifuge before opening to ensure complete recovery of vial contents.

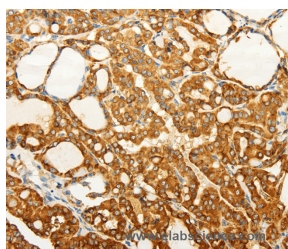
### Description

<b>Reactivity</b>	Human, Mouse
<b>Immunogen</b>	Synthetic peptide of human FZD6
<b>Host</b>	Rabbit
<b>Isotype</b>	IgG
<b>Purification</b>	Affinity purification
<b>Conjugation</b>	Unconjugated
<b>Buffer</b>	PBS with 0.05% sodium azide and 50% glycerol, PH7.4

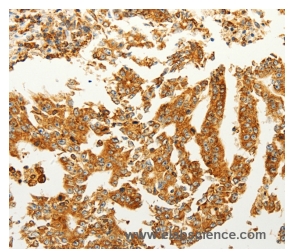
### Applications Recommended Dilution

**IHC** 1:100-1:300

### Data



Immunohistochemistry of paraffin-embedded Human thyroid cancer tissue using FZD6 Polyclonal Antibody at dilution 1:60



Immunohistochemistry of paraffin-embedded Human gastric cancer tissue using FZD6 Polyclonal Antibody at dilution 1:60

### Preparation & Storage

**Storage** Store at -20°C. Avoid freeze / thaw cycles.

### Background

This gene represents a member of the 'frizzled' gene family, which encode 7-transmembrane domain proteins that are receptors for Wnt signaling proteins. The protein encoded by this family member contains a signal peptide, a cysteine-rich domain in the N-terminal extracellular region, and seven transmembrane domains, but unlike other family members, this protein does not contain a C-terminal PDZ domain-binding motif. This protein functions as a negative regulator of the canonical Wnt/beta-catenin signaling cascade, thereby inhibiting the processes that trigger oncogenic transformation, cell proliferation, and inhibition of apoptosis. Alternative splicing results in multiple transcript variants, some of which do not encode a protein with a predicted signal peptide.

### For Research Use Only