

# AMZ1 Polyclonal Antibody

Catalog Number:E-AB-12989



**Note:** Centrifuge before opening to ensure complete recovery of vial contents.

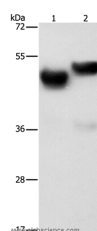
## Description

<b>Reactivity</b>	Human
<b>Immunogen</b>	Synthetic peptide of human AMZ1
<b>Host</b>	Rabbit
<b>Isotype</b>	IgG
<b>Purification</b>	Affinity purification
<b>Conjugation</b>	Unconjugated
<b>Formulation</b>	PBS with 0.05% sodium azide and 50% glycerol, PH7.4

## Applications Recommended Dilution

<b>WB</b>	1:500-1:2000
-----------	--------------

## Data



Western Blot analysis of Human fetal brain and liver tissue using AMZ1 Polyclonal Antibody at dilution of 1:1000

**Calculated Mw:55kDa**

## Preparation & Storage

**Storage** Store at -20°C. Avoid freeze / thaw cycles.

## Background

AMZ1 shares sequence similarity with archaeal metalloproteases called archaemetzincins, but it appears to act predominantly as a basic aminopeptidase. Inhibited by the general metalloprotease inhibitors o-phenanthroline and batimastat. Also significantly inhibited by amastatin, which is an inhibitor of aminopeptidases. Not inhibited by 4-(2-aminoethyl)-benzenesulfonyl fluoride, E-64, and TIMPS (tissue inhibitors of metalloproteinases), which are inhibitors of serine, cysteine, and matrix metalloproteases, respectively.

## For Research Use Only

A Reliable Research Partner in Life Science and Medicine

Toll-free: 1-888-852-8623

Web: [www.elabscience.com](http://www.elabscience.com)

Tel: 1-832-243-6086

Email: [techsupport@elabscience.com](mailto:techsupport@elabscience.com)

Fax: 1-832-243-6017