

Note: Centrifuge before opening to ensure complete recovery of vial contents.

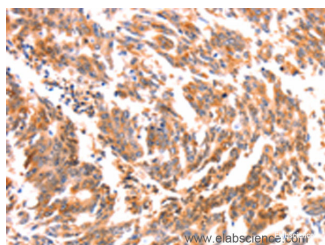
Description

Reactivity	Human
Immunogen	Synthetic peptide of human NES
Host	Rabbit
Isotype	IgG
Purification	Affinity purification
Conjugation	Unconjugated
Formulation	PBS with 0.05% sodium azide and 50% glycerol, PH7.4

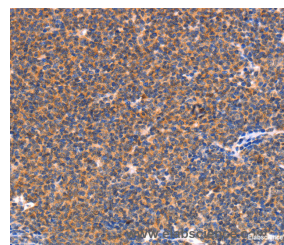
Applications Recommended Dilution

IHC	1:25-1:100
------------	------------

Data



Immunohistochemistry of paraffin-embedded Human gastric cancer tissue using NES Polyclonal Antibody at dilution 1:30



Immunohistochemistry of paraffin-embedded Human lymphoma tissue using NES Polyclonal Antibody at dilution 1:30

Preparation & Storage

Storage	Store at -20°C. Avoid freeze / thaw cycles.
----------------	---

Background

Nestin is a type IV intermediate filament protein expressed by neuroepithelial stem cells and which has been proposed to represent a marker for putative islet stem cells. It is a high molecular weight protein with a terminus greater than 500 residues. Nestins are expressed by several types of cells during development, mostly in dividing cells of the Central Nervous System, Peripheral Nervous System and myogenic tissues. It also represents the progenitor population of neural stem cell origin. The role of nestin in dynamic cells, particularly structural organization of the cell, appears strictly regulated by phosphorylation, especially its integration into heterogeneous intermediate filaments together with vimentin or internexin. Nestin has recently received attention as a marker for detecting newly formed endothelial cells.

For Research Use Only

A Reliable Research Partner in Life Science and Medicine

Toll-free: 1-888-852-8623

Web: www.elabscience.com

Tel: 1-832-243-6086

Email: techsupport@elabscience.com

Fax: 1-832-243-6017