

HTRA3 Polyclonal Antibody

Catalog No. E-AB-13006

Note: Centrifuge before opening to ensure complete recovery of vial contents.

Description

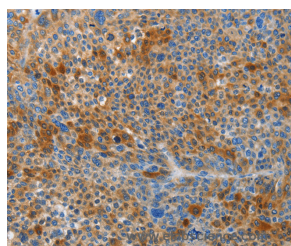
| | |
|---------------------|---|
| Reactivity | Human,Mouse,Rat |
| Immunogen | Synthetic peptide of human HTRA3 |
| Host | Rabbit |
| Isotype | IgG |
| Purification | Affinity purification |
| Conjugation | Unconjugated |
| Buffer | PBS with 0.05% sodium azide and 50% glycerol, PH7.4 |

Applications

Recommended Dilution

IHC 1:50-1:200

Data



Immunohistochemistry of paraffin-embedded Human liver cancer tissue using HTRA3 Polyclonal Antibody at dilution 1:45

Preparation & Storage

Storage Store at -20°C. Avoid freeze / thaw cycles.

Background

HtrA3, also known as PRSP (pregnancy-related serine protease), is a 453 amino acid secreted protein that contains one PDZ domain, one Kazal-like domain and one IGFBP N-terminal domain. Widely expressed with particularly high expression in ovary, heart, placenta and bladder, HtrA3 functions as a probable serine protease that is thought to play an important role in placental development. HtrA3 is downregulated in ovarian tumors, suggesting an alternative role in tumor suppression. HtrA3 exists as two alternatively spliced isoforms, designated short and long. The gene encoding HtrA3 maps to human chromosome 4, which encodes nearly 6% of the human genome and has the largest gene deserts (regions of the genome with no protein encoding genes) of all of the human chromosomes.

For Research Use Only