

## DDAH1 Polyclonal Antibody

**Catalog No.** E-AB-13014

*Note:* Centrifuge before opening to ensure complete recovery of vial contents.

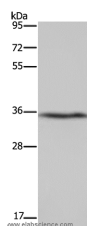
### Description

<b>Reactivity</b>	Human,Mouse,Rat
<b>Immunogen</b>	Synthetic peptide of human DDAH1
<b>Host</b>	Rabbit
<b>Isotype</b>	IgG
<b>Purification</b>	Affinity purification
<b>Conjugation</b>	Unconjugated
<b>Buffer</b>	PBS with 0.05% sodium azide and 50% glycerol, PH7.4

### Applications Recommended Dilution

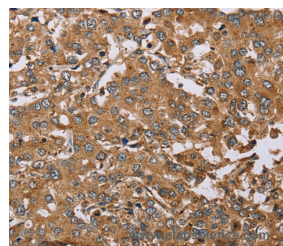
<b>WB</b>	1:200-1:1000
<b>IHC</b>	1:50-1:200

### Data

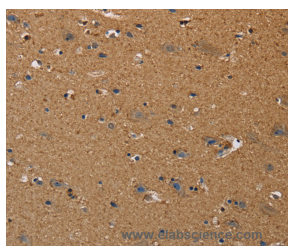


Western Blot analysis of Human fetal liver tissue using DDAH1 Polyclonal Antibody at dilution of 1:400

**Calculated Mw:31kDa**



Immunohistochemistry of paraffin-embedded Human liver cancer using DDAH1 Polyclonal Antibody at dilution of 1:50



Immunohistochemistry of paraffin-embedded Human brain using DDAH1 Polyclonal Antibody at dilution of 1:50

### Preparation & Storage

**Storage** Store at -20°C. Avoid freeze / thaw cycles.

### For Research Use Only

## Background

This gene belongs to the dimethylarginine dimethylaminohydrolase (DDAH) gene family. The encoded enzyme plays a role in nitric oxide generation by regulating cellular concentrations of methylarginines, which in turn inhibit nitric oxide synthase activity.