

PIK3R3 Polyclonal Antibody

Catalog Number: E-AB-13018

Note: Centrifuge before opening to ensure complete recovery of vial contents.

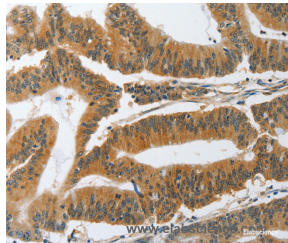
Description

Reactivity	Human, Mouse, Rat
Immunogen	Synthetic peptide of human PIK3R3
Host	Rabbit
Isotype	IgG
Purification	Affinity purification
Conjugation	Unconjugated
Formulation	PBS with 0.05% sodium azide and 50% glycerol, PH7.4

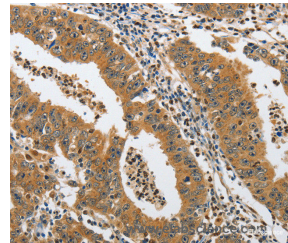
Applications Recommended Dilution

IHC	1:50-1:100
------------	------------

Data



Immunohistochemistry of paraffin-embedded Human colon cancer tissue using PIK3R3 Polyclonal Antibody at dilution 1:45



Immunohistochemistry of paraffin-embedded Human gastric cancer tissue using PIK3R3 Polyclonal Antibody at dilution 1:45

Preparation & Storage

Storage Store at -20°C. Avoid freeze / thaw cycles.

Background

Phosphatidylinositol 3-kinase is a lipid kinase that phosphorylates the inositol ring of phosphatidylinositol and related compounds at the 3' position. PI 3-kinase p55 (PIK3R3) is comprised of a catalytic subunit and a regulatory subunit. The human p55 protein is composed of a rare amino terminal region followed by a proline-rich motif and two Src homology 2 (SH2) domains. PI 3-kinase p55 mRNAs are expressed in most human fetal and adult tissues; predominant expression is observed in the adult testis. Splice variant(s) of PI 3-kinase p55 have been identified; one of which has a deletion of 36 amino acids at the amino terminus and another which has an insertion of 59 amino acids at position 256 between the SH2 domains. Research suggests that PI 3-kinase p55 interacts with the IGFIR (Insulin-like growth factor-I receptor) and IR (Insulin receptor) and may be involved in PI 3-kinase activation by these receptors.

For Research Use Only

A Reliable Research Partner in Life Science and Medicine

Toll-free: 1-888-852-8623

Web: www.elabscience.com

Tel: 1-832-243-6086

Email: techsupport@elabscience.com

Fax: 1-832-243-6017