

ALOX15 Polyclonal Antibody

Catalog No. E-AB-13055

Note: Centrifuge before opening to ensure complete recovery of vial contents.

Description

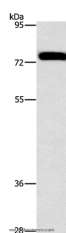
Reactivity	Human, Mouse, Rat
Immunogen	Synthetic peptide of human ALOX15
Host	Rabbit
Isotype	IgG
Purification	Affinity purification
Conjugation	Unconjugated
Buffer	PBS with 0.05% sodium azide and 50% glycerol, PH7.4

Applications

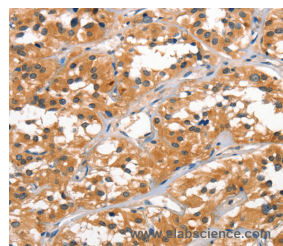
Recommended Dilution

WB 1:1000-1:5000,
IHC 1:50-1:200

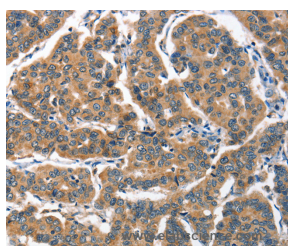
Data



Western Blot analysis of Hela cell using ALOX15 Polyclonal Antibody at dilution of 1:1300
Calculated Mw:75kDa



Immunohistochemistry of paraffin-embedded Human thyroid cancer using ALOX15 Polyclonal Antibody at dilution of 1:60



Immunohistochemistry of paraffin-embedded Human breast cancer using ALOX15 Polyclonal Antibody at dilution of 1:60

Preparation & Storage

Storage Store at -20°C. Avoid freeze / thaw cycles.

Background

For Research Use Only

Arachidonate 15-lipoxygenase is an enzyme that in humans is encoded by the ALOX15 gene. The ALOX15 gene maps to 17p13.3 in close proximity to the tumor-suppressor gene TP53. The ALOX15 gene product is implicated in antiinflammation, membrane remodeling, and cancer development/metastasis. Converts arachidonic acid to 15S-hydroperoxyeicosatetraenoic acid. Also acts on C-12 of arachidonate as well as on linoleic acid.