

CD80 Polyclonal Antibody

Catalog Number: E-AB-13083

1 Publications

Note: Centrifuge before opening to ensure complete recovery of vial contents.

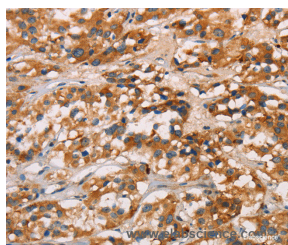
Description

Reactivity	Human
Immunogen	Synthetic peptide of human CD80
Host	Rabbit
Isotype	IgG
Purification	Affinity purification
Conjugation	Unconjugated
Formulation	PBS with 0.05% sodium azide and 50% glycerol, PH7.4

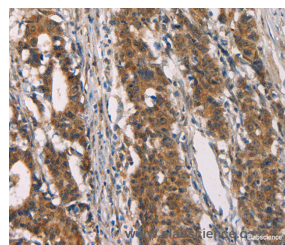
Applications Recommended Dilution

IHC	1:50-1:200
------------	------------

Data



Immunohistochemistry of paraffin-embedded Human thyroid cancer tissue using CD80 Polyclonal Antibody at dilution 1:50



Immunohistochemistry of paraffin-embedded Human gastric cancer tissue using CD80 Polyclonal Antibody at dilution 1:50

Preparation & Storage

Storage Store at -20°C. Avoid freeze / thaw cycles.

Background

The protein encoded by this gene is a membrane receptor that is activated by the binding of CD28 or CTLA-4. The activated protein induces T-cell proliferation and cytokine production. This protein can act as a receptor for adenovirus subgroup B and may play a role in lupus neuropathy.

For Research Use Only

A Reliable Research Partner in Life Science and Medicine

Toll-free: 1-888-852-8623

Web: www.elabscience.com

Tel: 1-832-243-6086

Email: techsupport@elabscience.com

Fax: 1-832-243-6017