

BST1 Polyclonal Antibody

Catalog Number:E-AB-13098

Note: Centrifuge before opening to ensure complete recovery of vial contents.

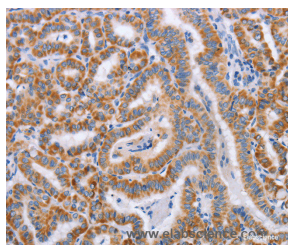
Description

| | |
|---------------------|---|
| Reactivity | Human,Mouse,Rat |
| Immunogen | Synthetic peptide of human BST1 |
| Host | Rabbit |
| Isotype | IgG |
| Purification | Affinity purification |
| Conjugation | Unconjugated |
| Formulation | PBS with 0.05% sodium azide and 50% glycerol, PH7.4 |

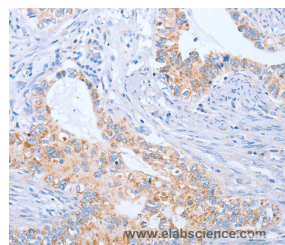
Applications Recommended Dilution

| | |
|------------|------------|
| IHC | 1:50-1:200 |
|------------|------------|

Data



Immunohistochemistry of paraffin-embedded Human thyroid cancer tissue using BST1 Polyclonal Antibody at dilution 1:50



Immunohistochemistry of paraffin-embedded Human cervical cancer tissue using BST1 Polyclonal Antibody at dilution 1:50

Preparation & Storage

| | |
|----------------|---|
| Storage | Store at -20°C. Avoid freeze / thaw cycles. |
|----------------|---|

Background

Bone marrow stromal cell antigen-1 is a stromal cell line-derived glycosylphosphatidylinositol-anchored molecule that facilitates pre-B-cell growth. The deduced amino acid sequence exhibits 33% similarity with CD38. BST1 expression is enhanced in bone marrow stromal cell lines derived from patients with rheumatoid arthritis. The polyclonal B-cell abnormalities in rheumatoid arthritis may be, at least in part, attributed to BST1 overexpression in the stromal cell population.

For Research Use Only

A Reliable Research Partner in Life Science and Medicine

Toll-free: 1-888-852-8623

Web: www.elabscience.com

Tel: 1-832-243-6086

Email: techsupport@elabscience.com

Fax: 1-832-243-6017