

Note: Centrifuge before opening to ensure complete recovery of vial contents.

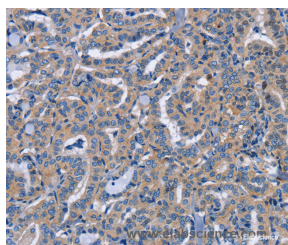
Description

Reactivity	Human
Immunogen	Synthetic peptide of human NCR2
Host	Rabbit
Isotype	IgG
Purification	Affinity purification
Conjugation	Unconjugated
Formulation	PBS with 0.05% sodium azide and 50% glycerol, PH7.4

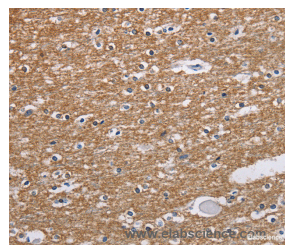
Applications Recommended Dilution

IHC	1:50-1:200
------------	------------

Data



Immunohistochemistry of paraffin-embedded Human thyroid cancer tissue using NCR2 Polyclonal Antibody at dilution 1:60



Immunohistochemistry of paraffin-embedded Human brain tissue using NCR2 Polyclonal Antibody at dilution 1:60

Preparation & Storage

Storage	Store at -20°C. Avoid freeze / thaw cycles.
----------------	---

Background

Natural cytotoxicity triggering receptor 2 is a protein that in humans is encoded by the NCR2 gene. NCR2 has also been designated as CD336 (cluster of differentiation 336). NKp44 is a natural cytotoxicity receptor that is expressed on IL-2-activated human NK cells and may contribute to the increased efficiency of NK cells to mediate tumor cell lysis. NKp44 is composed of one Ig-like extracellular domain, a transmembrane segment, and a cytoplasmic domain. Prolactin up-regulates and cortisol down-regulates the surface expression of NKp44 at the transcriptional level. A cellular ligand for NKp44 (NKp44L) is expressed during HIV-1 infection and is correlated with the progression of CD4+ T cell depletion and an increase of viral load.

For Research Use Only

A Reliable Research Partner in Life Science and Medicine

Toll-free: 1-888-852-8623

Web: www.elabscience.com

Tel: 1-832-243-6086

Email: techsupport@elabscience.com

Fax: 1-832-243-6017