

## CTBP1 Polyclonal Antibody

Catalog No. E-AB-13175

**Note:** Centrifuge before opening to ensure complete recovery of vial contents.

### Description

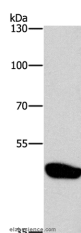
<b>Reactivity</b>	Human,Mouse,Rat
<b>Immunogen</b>	Synthetic peptide of human CTBP1
<b>Host</b>	Rabbit
<b>Isotype</b>	IgG
<b>Purification</b>	Affinity purification
<b>Conjugation</b>	Unconjugated
<b>Buffer</b>	PBS with 0.05% sodium azide and 50% glycerol, PH7.4

### Applications

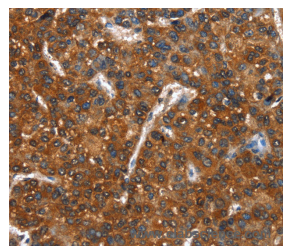
### Recommended Dilution

<b>WB</b>	1:500-1:2000
<b>IHC</b>	1:50-1:200

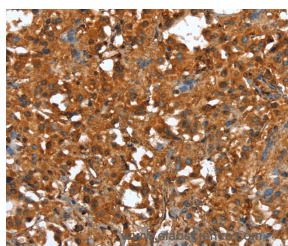
### Data



Western Blot analysis of Mouse brain tissue using CTBP1 Polyclonal Antibody at dilution of 1:500  
**Calculated Mw:48kDa**



Immunohistochemistry of paraffin-embedded Human liver cancer using CTBP1 Polyclonal Antibody at dilution of 1:40



Immunohistochemistry of paraffin-embedded Human thyroid cancer using CTBP1 Polyclonal Antibody at dilution of 1:40

### Preparation & Storage

**Storage** Store at -20°C. Avoid freeze / thaw cycles.

### Background

### For Research Use Only

This gene encodes a protein that binds to the C-terminus of adenovirus E1A proteins. This phosphoprotein is a transcriptional repressor and may play a role during cellular proliferation. This protein and the product of a second closely related gene, CTBP2, can dimerize. Both proteins can also interact with a polycomb group protein complex which participates in regulation of gene expression during development. Alternative splicing of transcripts from this gene results in multiple transcript variants.