

FAT1 Polyclonal Antibody

Catalog Number: E-AB-13237

1 Publications



Note: Centrifuge before opening to ensure complete recovery of vial contents.

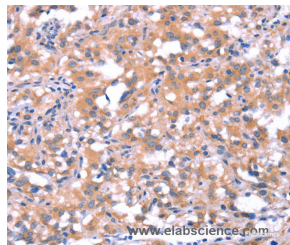
Description

Reactivity	Human
Immunogen	Synthetic peptide of human FAT1
Host	Rabbit
Isotype	IgG
Purification	Affinity purification
Conjugation	Unconjugated
Formulation	PBS with 0.05% sodium azide and 50% glycerol, PH7.4

Applications Recommended Dilution

IHC	1:50-1:200
------------	------------

Data



Immunohistochemistry of paraffin-embedded Human thyroid cancer tissue using FAT1 Polyclonal Antibody at dilution 1:40

Preparation & Storage

Storage Store at -20°C. Avoid freeze / thaw cycles.

Background

This gene is an ortholog of the *Drosophila* fat gene, which encodes a tumor suppressor essential for controlling cell proliferation during *Drosophila* development. The gene product is a member of the cadherin superfamily, a group of integral membrane proteins characterized by the presence of cadherin-type repeats. In addition to containing 34 tandem cadherin-type repeats, the gene product has five epidermal growth factor (EGF)-like repeats and one laminin A-G domain. This gene is expressed at high levels in a number of fetal epithelia. Its product probably functions as an adhesion molecule and/or signaling receptor, and is likely to be important in developmental processes and cell communication. Transcript variants derived from alternative splicing and/or alternative promoter usage exist, but they have not been fully described.

For Research Use Only

A Reliable Research Partner in Life Science and Medicine

Toll-free: 1-888-852-8623

Web: www.elabscience.com

Tel: 1-832-243-6086

Email: techsupport@elabscience.com

Fax: 1-832-243-6017