

Note: Centrifuge before opening to ensure complete recovery of vial contents.

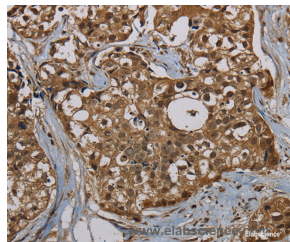
Description

Reactivity	Human,Mouse
Immunogen	Synthetic peptide of human PNN
Host	Rabbit
Isotype	IgG
Purification	Affinity purification
Conjugation	Unconjugated
Formulation	PBS with 0.05% sodium azide and 50% glycerol, PH7.4

Applications Recommended Dilution

IHC	1:50-1:200
------------	------------

Data



Immunohistochemistry of paraffin-embedded Human breast cancer tissue using PNN Polyclonal Antibody at dilution 1:50

Preparation & Storage

Storage Store at -20°C. Avoid freeze / thaw cycles.

Background

Pinin is a desmosomal associated protein involved with the maintenance of cell to cell adhesion of the epithelium. Pinin is a widespread protein and has been shown to play an important role in cell adhesion through its interaction with nuclear complexes. Pinin is also involved in pre-mRNA splicing through its interactions with a C-terminal RS domain of Cyclophilin G, a Moca type nuclear cyclophilin. Pinin becomes nuclear during the early stages of embryonic development and remains so throughout the entire period. Defects or lack of Pinin can be lethal at perinatal stages and causes defects in the cardiac outflow tract, axial skeleton, palate and dorsal dermis.

For Research Use Only

A Reliable Research Partner in Life Science and Medicine

Toll-free: 1-888-852-8623

Web: www.elabscience.com

Tel: 1-832-243-6086

Email: techsupport@elabscience.com

Fax: 1-832-243-6017